



MST TELEHANDLERS
the right choice

MST



SANKO | www.mst-tr.com





The results of engineering excellence, production with high technology and well-accepted components by worldwide created six different models of MST Telehandler range.

MST Telehandlers are ready to serve the market in agriculture, construction, industry and recycling sectors.

MST is the right choice.





ENGINE

1100 series Perkins engines with high torque at low RPMs provide superior performance in addition to low fuel consumption against its equivalents. Easy servicing, low maintenance costs and worldwide spare parts availability are outstanding features of Perkins engine.

TRANSMISSION

The variable displacement axial piston pump in combination with a two-stage gear box coupled with a bent-axis variable displacement hydromotor gives excellent tractive force and and manoeuvrability.

The driving comfort and performance with internationally recognized components from Rexroth and Dana are maximized.



FRAME AND TELESCOPIC BOOM

Thanks to 3D design programs and analysis softwares that make us produce robust and ever-lasting metallic structures with high-tech production capabilities.



MAINTENANCE

Easy access to servicing internal components.



INTERNATIONAL TECHNICAL SUPPORT

Fully equipped and experienced after sales service network all around the world.

A wide range of spare parts stock available.

MAXIMUM COMFORT FOR THE OPERATOR



- Steering wheel adjustable in all directions



- Multifunctional, ergonomic and user-friendly dashboard



- Audiovisual over load warning system against tipping.



- Three steering mode selection availability with 4 wheel drive:
1- 2WS: Two wheel steer
2- 4WS: Four wheel steer (circle)
3- Crab steer



- 2 different multifunctional and easy use joystick system.



- Drawbar at the back for trailer use.



- MST telehandler cab with ROPS & FOPS approval.
- Superb all round visibility enhances the operator's work performance.
- Comfortable and ergonomic operator seat.
- Stereo Radio - CD player.
- Optional air conditioner system.

Attachments: A wide range of attachments are available.



1 m³ bucket
with teeth



1 m³ bucket
without teeth



2.5 m³ bucket
for light materials



2 m³ bucket
for light materials



Bale Clamp



Palette Forks



Basket



1 m³ bucket without teeth
(in lesser width than wheels)

A red and white MST telehandler is positioned in a large warehouse, surrounded by tall stacks of white, rectangular bales of material, likely cotton or wool. The telehandler's boom is extended upwards, and its bucket is open, positioned near the top of one of the stacks. The warehouse has a high ceiling with visible steel trusses and skylights. The telehandler has "MST" and "ST835" written on its side and boom.

MST TELEHANDLERS FOR AGRICULTURAL SECTOR SUPERIOR MANOEUVARABILITY AND PERFORMANCE

- MST ST 7.40 and 8.35 models having compact frames provide superior manoeuvrability to the operators to be able to work even in the narrowest areas.
- A wide range of attachments applicable in various working environments.
- Telescopic boom provides quick working capability for loading & unloading operations.
- 100 hp turbo diesel engine offers a low fuel consumption with high stowing and traction power.



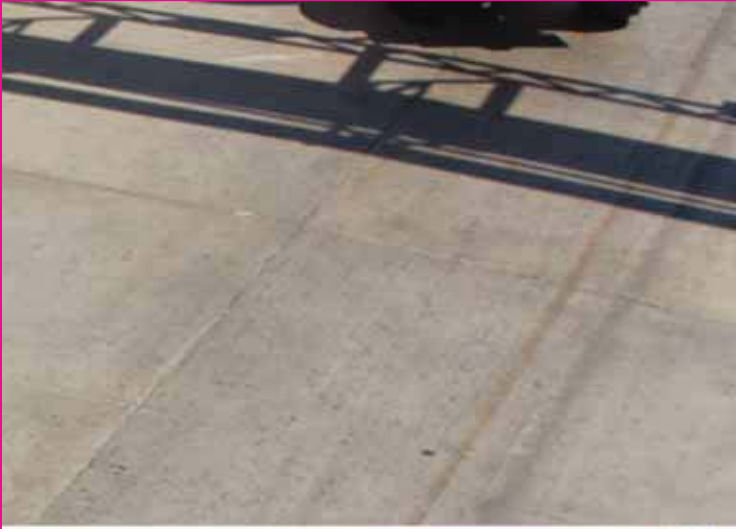
REVERSE FAN SYSTEM

In dusty working environment, cleaning of the radiator becomes easier by the help of Reverse Fan System. The system which is controlled from cabin inside turns the radiator fan in reverse direction to throw out materials; like dust or cotton particles which cause dropping the radiator cooling efficiency.



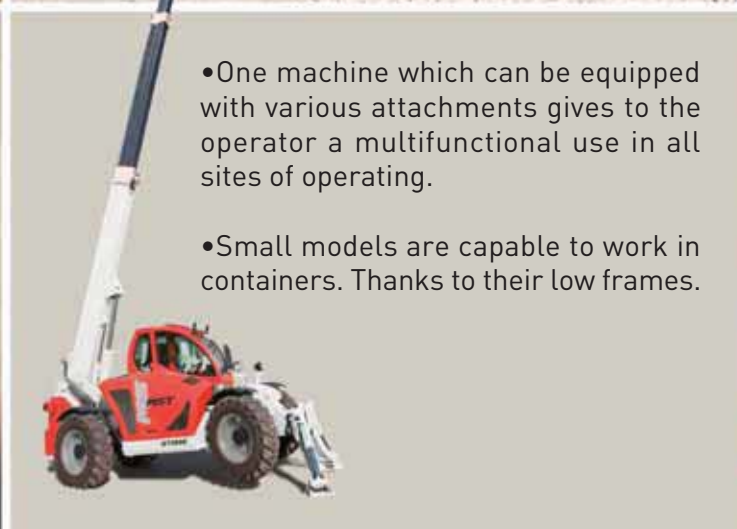
PRACTICAL AND EFFECTIVE
SOLUTIONS FOR CONSTRUCTION,
INDUSTRY AND RECYCLING SECTORS

MST



- The complete range of MST telehandlers offer all solutions to the requirements in a wide range of applications from farms to construction sites, from ports to warehouses.


- From 7 to 17 meters, MST telehandlers provide high manoeuvrability with ergonomic controls, comfortable and safe cab for the operator and total visibility of the field of action.



- One machine which can be equipped with various attachments gives to the operator a multifunctional use in all sites of operating.

- Small models are capable to work in containers. Thanks to their low frames.

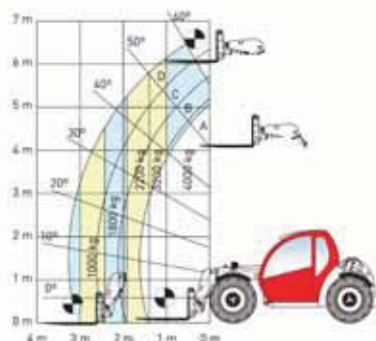
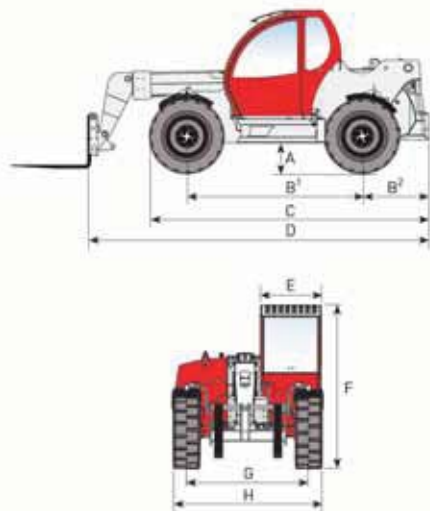


- 
- A red and white MST ST1135 telehandler is shown in a warehouse setting, lifting a yellow pallet. The machine is positioned on the right side of the frame, with its telescopic boom extended upwards and to the left. The boom is white with black joints and has "ST1135" and "MST" printed on it. The yellow pallet is being lifted by the machine's forks. In the background, there are large stacks of yellow pallets, each labeled "YTONG". The sky is clear and blue.
- High manoeuvrability in the narrow places
 - Wide visibility
 - Great steering capability in all conditions
 - Comfortable and ergonomic cab
 - Easy control of all functions and safety systems inside the cab
 - Simplicity on the control
 - Various attachments
 - Easy maintenance
 - Low fuel consumption



**MST TELEHANDLERS
REAL POWER
&
PERFORMANCE**

MST ST 7.40



ENGINE

Engine	PERKINS 1104C-44T
Max. Power	75 Kw (100 HP) 2200 rpm
Type	Four stroke, diesel engine
Cylinder number and layout	4 cylinder, in line
Displacement	4490 cm³
Cooling system	Water

PERFORMANCE

Max. lifting capacity	4,000 kg
Max. lifting capacity at max. reach	3,200 kg
Capacity at max. boom extension	1000 kg
Max. lifting height	6.35 m
Max. horizontal boom extension	3.30 m
Distance between the load center and front axle at max. Height	0.40 m
Tilt angle	120°
Digging force	4,550 daN
Traction force	7,500 daN
Gradeability	40
Machine weight (empty)	6,300 kg
Max. speed	40 km/h

TRANSMISSION

Transmission	Axial piston variable displacement hydrostatic pump
Hydraulic motor	Axial piston variable displacement motor
Reversing gear	Electro-hydraulic inching pedal for controlled forward movement, servo controlled two speed gear box

DIFFERENTIAL - AXLES

Axles	2
Driving mode	4WS/Crab steer/ ZWS
Front Axle	Rigid
Rear Axle	Oscillating
Service Brake	Oil bath on the 4 wheels with double hydraulic system and servo brake
Park Brake	Negative parking brake

HYDRAULIC SYSTEM

Pump Capacity	100W/1'
Max. working pressure	230 bar
Control valve with joystick	3 in 1

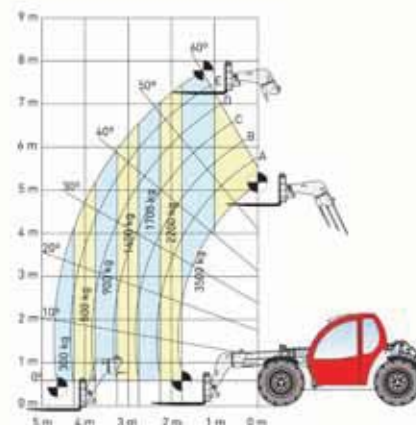
CAPACITIES

Hydraulic tank	90
Fuel tank	60

TYRES

Tyres	405/70R20 (16.0/70-20)
-------	------------------------

MST ST 8.35



ENGINE

Engine	PERKINS 1104C-44T
Max. Power	75 Kw (100 HP) 2200 rpm
Type	Four stroke, diesel engine
Cylinder number and layout	4 cylinder, in line
Displacement	4490 cm³
Cooling system	Water

PERFORMANCE

Max. lifting capacity	3,500 kg
Max. lifting capacity at max. reach	3,000 kg
Capacity at max. boom extension	300 kg
Max. lifting height	7.80 m
Max. horizontal boom extension	4.60 m
Distance between the load center and front axle at max. Height	1.50 m
Tilt angle	120°
Digging force	4,550 daN
Traction force	7,500 daN
Gradeability	40
Machine weight (empty)	6,400 kg
Max. speed	40 km/h

TRANSMISSION

Transmission	Axial piston variable displacement hydrostatic pump
Hydraulic motor	Axial piston variable displacement motor
Reversing gear	Electro-hydraulic inching pedal for controlled forward movement, servo controlled two speed gear box

DIFFERENTIAL - AXLES

Axles	2
Driving mode	4WS/Crab steer/ ZWS
Front Axle	Rigid
Rear Axle	Oscillating
Service Brake	Oil bath on the 4 wheels with double hydraulic system and servo brake
Park Brake	Negative parking brake

HYDRAULIC SYSTEM

Pump Capacity	100W/1'
Max. working pressure	230 bar
Control valve with joystick	3 in 1

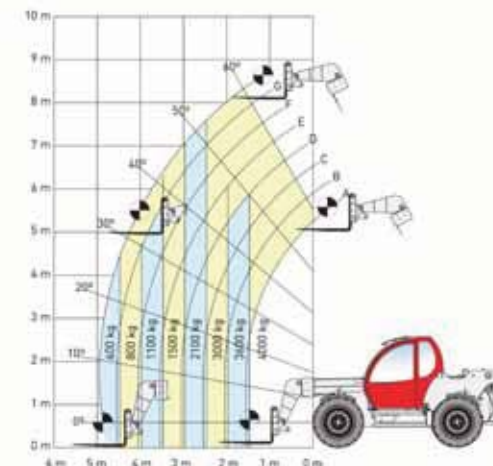
CAPACITIES

Hydraulic tank	90
Fuel tank	60

TYRES

Tyres	405/70R20 (16.0/70-20)
-------	------------------------

MST ST 9.40



ENGINE

Engine	PERKINS 1104C-44T
Max. Power	75 Kw (100 HP) 2200 rpm
Type	Four stroke, diesel engine
Cylinder number and layout	4 cylinder, in line
Displacement	4490 cm³
Cooling system	Water

PERFORMANCE

Max. lifting capacity	4,000 kg
Max. lifting capacity at max. reach	3,000 kg
Capacity at max. boom extension	600 kg
Max. lifting height	8.70 m
Max. horizontal boom extension	4.90 m
Distance between the load center and front axle at max. Height	1.20 m
Tilt angle	135°
Digging force	4,550 daN
Traction force	7,500 daN
Gradeability	40
Machine weight (empty)	9,200 kg
Max. speed	30 km/h

TRANSMISSION

Transmission	Axial piston variable displacement hydrostatic pump
Hydraulic motor	Axial piston variable displacement motor
Reversing gear	Electro-hydraulic inching pedal for controlled forward movement, servo controlled two speed gear box

DIFFERENTIAL - AXLES

Axles	2
Driving mode	4WS/Crab steer/ ZWS
Front Axle	Rigid
Rear Axle	Oscillating
Service Brake	Oil bath on the 4 wheels with double hydraulic system and servo brake
Park Brake	Negative parking brake

HYDRAULIC SYSTEM

Pump Capacity	100W/1'
Max. working pressure	230 bar
Control valve with joystick	3 in 1

CAPACITIES

Hydraulic tank	150
Fuel tank	120

TYRES

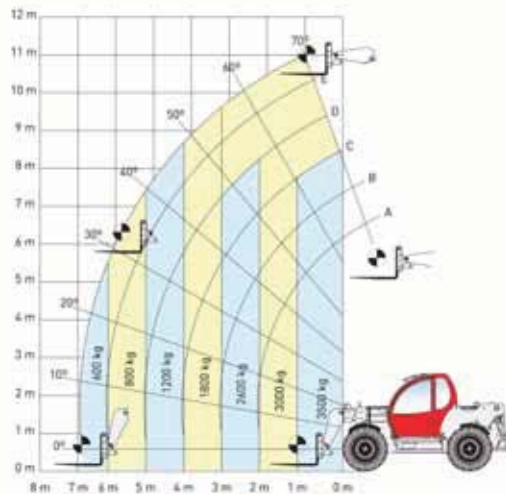
Tyres	405/70R24 (16.0/70-24)
-------	------------------------

SIZES	ST7.40	ST8.35	ST9.40
A	370	370	485
B¹	2700	2700	2760
B²	660	660	1050
C	3900	3900	4400
D	4380	5160	5370
E	950	950	950
F	2100	2100	2578
G	1700	1700	1920
H	2100	2100	2345
I	4800	5400	5369
J	4000	4000	4300
K	1700	1700	1745

Sizes mm type.

MST

MST ST 11.35



ENGINE

Engine	PERKINS 1104C-44T
Max. Power	75 Kw (100 HP) 2200 rpm
Type	Four stroke, diesel engine
Cylinder number and layout	4 cylinder, in line
Displacement	4490 cm ³
Cooling system	Water

PERFORMANCE

Max. lifting capacity	3,500 kg
Max. lifting capacity at max. reach	2,600 kg
Capacity at max. boom extension	600 kg
Max. lifting height	11,00 m
Max. horizontal boom extension	6,90 m
Distance between the load center and front axle at max. Height	0,80 m
Tilt angle	135°
Digging force	4,550 daN
Traction force	7,500 daN
Gradeability	≥40
Machine weight (empty)	9,800 kg
Max. speed	30 km/h

TRANSMISSION

Transmission	Axial piston variable displacement hydrostatic pump
Hydraulic motor	Axial piston variable displacement motor
Reversing gear	Electro-hydraulic inching pedal for controlled forward movement, servo controlled two speed gear box

DIFFERENTIAL - AXLES

Axles	2
Driving mode	4WS/Crab steer/ 2WS
Front Axle	Rigid
Rear Axle	Oscillating
Service Brake	Oil bath on the 4 wheels with double hydraulic system and servo brake
Park Brake	Negative parking brake

HYDRAULIC SYSTEM

Pump Capacity	100lt/1'
Max. working pressure	230 bar
Control valve with joystick	4 in 1

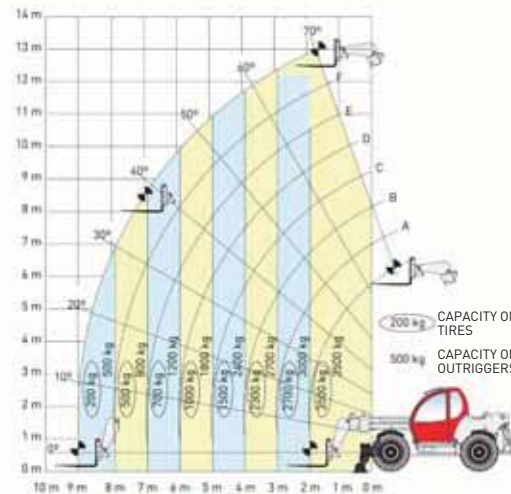
CAPACITIES

Hydraulic tank	150
Fuel tank	120

TYRES

Tyres	405/70R24 (16.0/70-24)
-------	------------------------

MST ST 13.35



ENGINE

Engine	PERKINS 1104C-44T
Max. Power	75 Kw (100 HP) 2200 rpm
Type	Four stroke, diesel engine
Cylinder number and layout	4 cylinder, in line
Displacement	4490 cm ³
Cooling system	Water

PERFORMANCE

Max. lifting capacity	3,500 kg
Max. lifting capacity at max. reach	2,700 kg
Capacity at max. boom extension	200 kg
Max. lifting height	13,00 m
Max. horizontal boom extension	9,00 m
Distance between the load center and front axle at max. Height	1,70 m
Tilt angle	135°
Digging force	4,550 daN
Traction force	7,500 daN
Gradeability	≥40
Machine weight (empty)	11,200 kg
Max. speed	30 km/h

TRANSMISSION

Transmission	Axial piston variable displacement hydrostatic pump
Hydraulic motor	Axial piston variable displacement motor
Reversing gear	Electro-hydraulic inching pedal for controlled forward movement, servo controlled two speed gear box

DIFFERENTIAL - AXLES

Axles	2
Driving mode	4WS/Crab steer/ 2WS
Front Axle	Rigid
Rear Axle	Oscillating
Service Brake	Oil bath on the 4 wheels with double hydraulic system and servo brake
Park Brake	Negative parking brake

HYDRAULIC SYSTEM

Pump Capacity	100lt/1'
Max. working pressure	230 bar
Control valve with joystick	4in 1

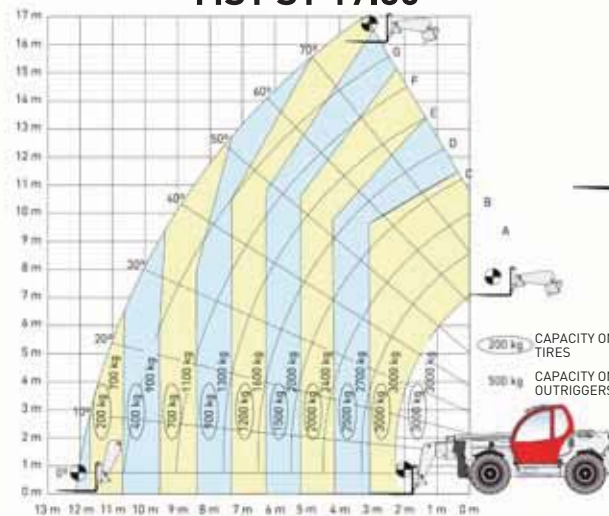
CAPACITIES

Hydraulic tank	150
Fuel tank	120

TYRES

Tyres	405/70R24 (16.0/70-24)
-------	------------------------

MST ST 17.30



ENGINE

Engine	PERKINS 1104C-44T
Max. Power	75 Kw (100 HP) 2200 rpm
Type	Four stroke, diesel engine
Cylinder number and layout	4 cylinder, in line
Displacement	4490 cm ³
Cooling system	Water

PERFORMANCE

Max. lifting capacity	3,000 kg
Max. lifting capacity at max. reach	1,200 kg
Capacity at max. boom extension	700 kg
Max. lifting height	16,30 m
Max. horizontal boom extension	12,30 m
Distance between the load center and front axle at max. Height	3,00 m
Tilt angle	135°
Digging force	4,550 daN
Traction force	7,500 daN
Gradeability	≥40
Machine weight (empty)	12,000 kg
Max. speed	30 km/h

TRANSMISSION

Transmission	Axial piston variable displacement hydrostatic pump
Hydraulic motor	Axial piston variable displacement motor
Reversing gear	Electro-hydraulic inching pedal for controlled forward movement, servo controlled two speed gear box

DIFFERENTIAL - AXLES

Axles	2
Driving mode	4WS/Crab steer/ 2WS
Front Axle	Rigid
Rear Axle	Oscillating
Service Brake	Oil bath on the 4 wheels with double hydraulic system and servo brake
Park Brake	Negative parking brake

HYDRAULIC SYSTEM

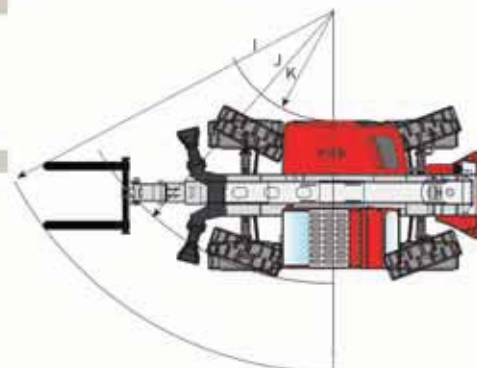
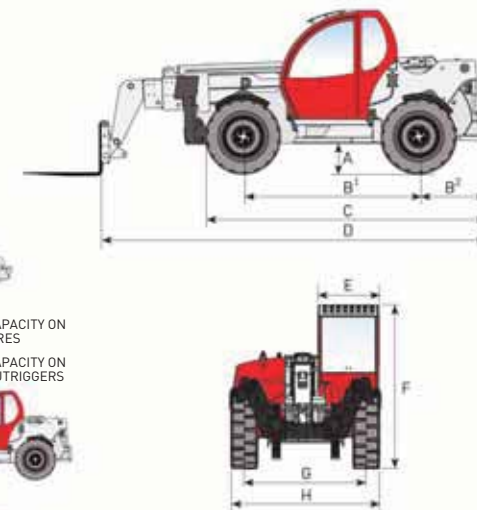
Pump Capacity	100lt/1'
Max. working pressure	230 bar
Control valve with joystick	4 in 1

CAPACITIES

Hydraulic tank	150
Fuel tank	120

TYRES

Tyres	405/70R24 (16.0/70-24)
-------	------------------------



SIZES

	ST11.35	ST13.35	ST17.30
A	485	485	485
B ¹	2760	2760	2760
B ²	1050	1050	1050
C	4400	4400	4440
D	5100	5795	6071
E	950	950	950
F	2578	2578	2578
G	1920	1920	1920
H	2345	2345	2345
I	5180	5694	5694
J	4300	4300	4300
K	1745	1745	1745

Sizes mm type.

SANKO MAKİNA PAZARLAMA VE TİCARET A.Ş.

www.mst-tr.com

e-mail: export@mst-tr.com

HEAD OFFICE

Hürriyet Mah., E-5 Yan Yol Üzeri No:57

Kartal - İstanbul / TURKEY

Tel: +90 216 453 04 00 Fax: +90 216 453 04 01

FACTORY

4. Organize Sanayi Bölgesi Baspınar Gaziantep / TURKEY

Tel: +90 342 357 00 33 Fax: +90 342 357 00 46

Specifications in this catalogue are subject to change without prior notice for quality enhancement.



SANKO | www.mst-tr.com



MST
TELEHANDLER